

MR Mechanical Relay

Descriptions

The MR Mechanical Relay is a general purpose relay suitable for both low voltage and power switching. It features a low power coil, the 12VDC version requires only 100ma to energize. The DPDT relay is rated at 10A, 120VAC. Each relay has an LED showing the low voltage status.



Features:

- 10⁸ Mechanical operations (DC type)
- Switch low and high level loads from 100 microAmps to 7Amps
- UL (file No.: E169380) recognized
- Pluggable base is panel mount or din rail
- The low voltage side has a handy status LED

Specifications

CONTACT

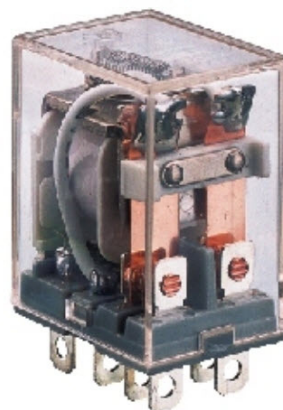
Initial Current Resistance, (By Voltage Drop 60VDC 1A)	30mOhm
Contact Material.Gol-flash silver ally
Switching Capacity	7A/250VAC
Max Switching Power	1,750VA
Max Switching Voltage	120VAC
Max Switching Current.	7A

COIL DATA

Coil Voltage	12VDC-120VAC-220VAC
Coil Resistance	160ohm(+/- 10%)
Nominal Operating Power	approx 90 ma

CHARACTERISTICS

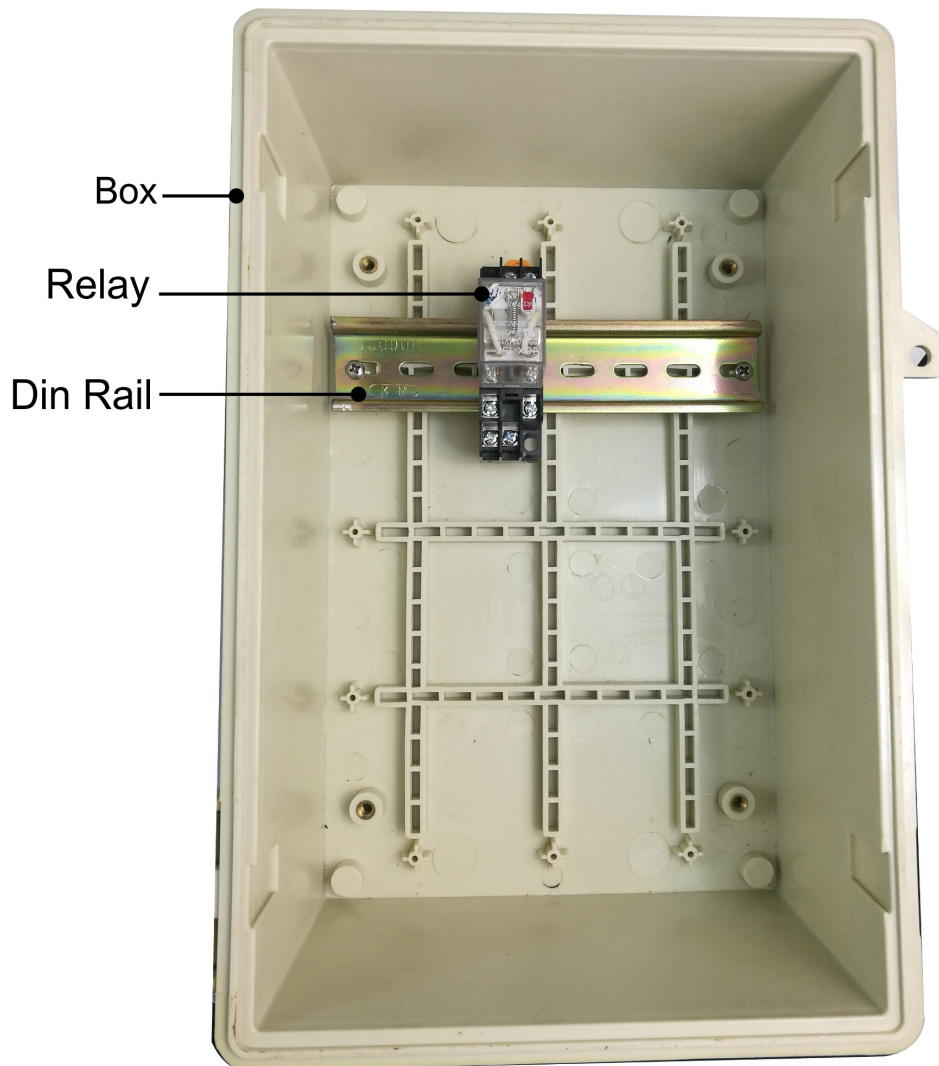
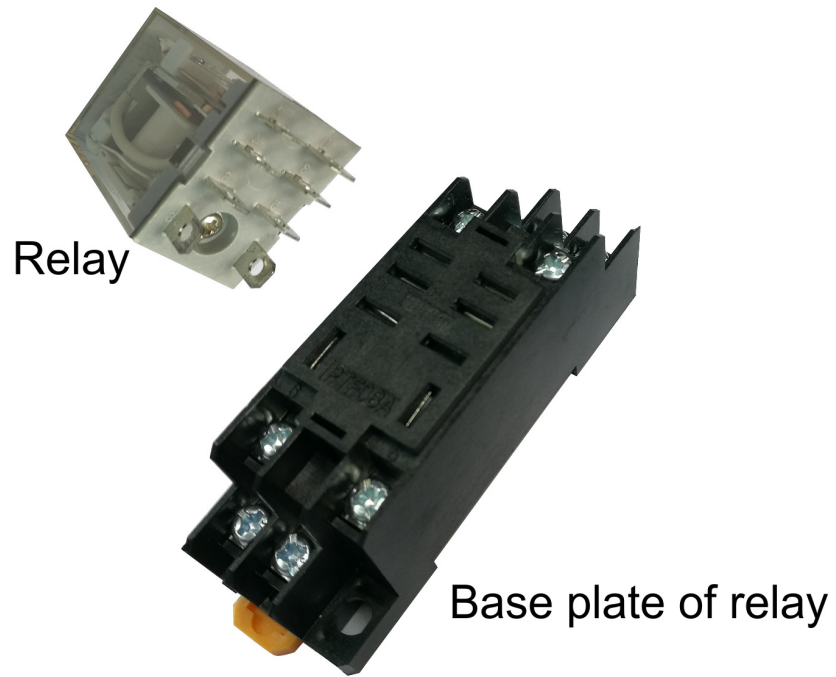
Max Operating Speed	20cpm
Operate Time(at nominal voltage)	Approx 20msec
Operating Temp. Range	-50 to 50°C
Unit Weight.	34g/1.2oz
Relay Dimensions	1.386" H x .819" Wx1.071"D
Socket Dimensions.	695" H x 1.575" L x 1.18" W



Specify

- MR-DC12V MECHANICAL RELAY with base, 12VDC coil
- MR-AC24V MECHANICAL RELAY with base, 24VAC coil
- MR-AC120V MECHANICAL RELAY with base, 120VAC coil
- MR-AC220V MECHANICAL RELAY with base, 220VAC coil

Installation



Wiring diagram

MR3000

